

# Window indicator

## Technical Datasheet

**This circular sight glass is ideal for you to visually check the presence, colour and condition of a liquid**

This model is designed to provide a window for viewing the contents of a vessel or tank. Normally these are welded to the tank, but can be supplied suitable for bolting to a vessel or a pipe flange if required.

The windows are toughened borosilicate glass to suit the contents of the vessel.

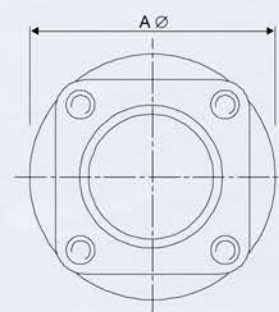
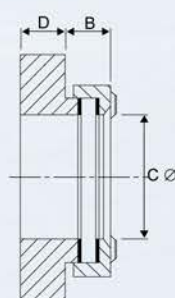


### Features

|                     |                 |
|---------------------|-----------------|
| <b>Pressure:</b>    | up to 40 bar    |
| <b>Temperature:</b> | up to 250°C     |
| <b>Sizes:</b>       | 40 to 150mm     |
| <b>Materials:</b>   | Stainless steel |

### Dimensions

| Nominal Bore (mm) | A   | B  | C   | D  |
|-------------------|-----|----|-----|----|
| 40                | 78  | 14 | 42  | 15 |
| 50                | 88  | 15 | 48  | 15 |
| 65                | 112 | 20 | 62  | 20 |
| 80                | 138 | 22 | 77  | 24 |
| 100               | 164 | 29 | 100 | 24 |
| 150               | 240 | 38 | 150 | 30 |



Specifications are subject to change without notice.  
Product images are for illustrative purposes only.